

# Saramonic

Two-channel Audio Mixer  
With Phantom Power

双通道音频混音器

**SR-PAX1**

User Manual  
用户手册



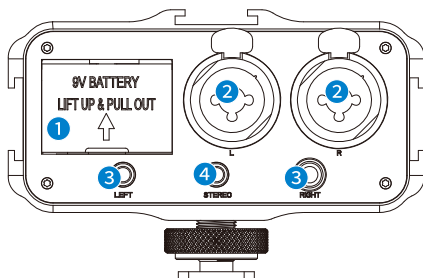
# Product Introduction

## General Introductions

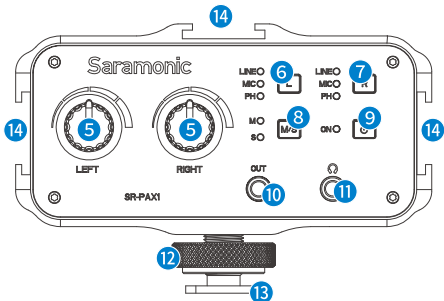
The Saramonic SR-PAX1 is a two-channel audio mixer with phantom power, specially designed for mirrorless digital camera, DSLR camera and camcorder with a microphone jack. It is a compact and lightweight mixer ideal for recording professional quality audio from two sources and mixing them into your camera.

With two sets of inputs, the SR-PAX1 accepts signals from a wide variety of mic or line level sources such as balanced XLR microphones, wireless microphones, guitars, or any musical instruments with a 6.35mm connector. The 3.5mm inputs are also ideal for connecting audio devices with a 3.5mm output such as a smart phone or an MP3 player. The input levels of each channel can be easily controlled with the dual control knobs. A phone jack allows you to monitor the audio in real time. The SR-PAX1 makes your recording work much easier.

## Product Structure

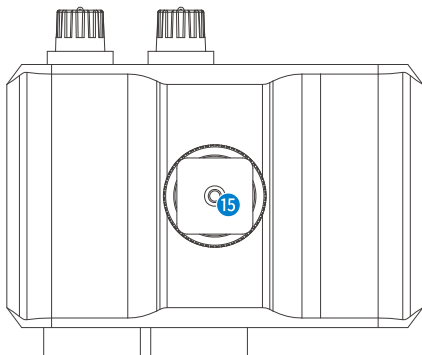


- 1** Battery Compartment  
Operates on a 9 volt battery (not included). You could use a lithium type battery for longer operating time.
- 2** For microphone: two balanced XLR inputs.  
For guitar: two 1/4" (6.35mm) mono standard inputs.
- 3** Left and right mono 1/8" (3.5 mm) mini-Jack inputs.
- 4** Stereo 1/8" (3.5 mm) mini-Jack input.



- 5** Dual Trim Control Knobs  
Adjust the signal of each channel to the optimum recording levels.
- 6** Left Channel Control Button  
Control the inputs of left channel. Select LINE or MIC or Phantom level for the left channel.
- 7** Right Channel Control Button  
Control the inputs of right channel. Select LINE or MIC or Phantom level for the right channel.
- 8** Mono/Stereo Button (M/S)  
When recording one channel, please use the mono(M) setting. The signal will be sent to both left and right channels. When recording two channels, please use the stereo(S) setting. The level of each channel can be controlled individually.
- 9** Power Button  
Main power switch for SR-PAX1.
- 10** Output (OUT)  
Stereo 1/8" (3.5 mm) output jack. Use the included signal transmission line to send the audio signal from the adapter to your camera.
- 11** 3.5mm Headphone Output for Monitoring
- 12** Lock Knob
- 13** Standard Cold Shoe

- 14 Three Integrated Mounting Shoes  
Attach a variety of microphones or other accessories.



- 15 1/4" Female Screw Hole

## Specification

Input	XLR & 6.3mm jack x 2 1 /8" (3.5 mm) jack x 3
Output	1/8" (3.5 mm) jack x 1
Phone	1/8" (3.5 mm) jack x 1
Frequency Response	20 Hz to 20 KHz, +/-1 dB
THD	Less than 0.01% @ 1 kHz, -30 dBu input
SNR	74dBu @ 1 kHz, -30 dBu input
L & R Gain	LINE: -30dBu MIC: 0dBu MIC/PH: 0dBu
Phantom Power	for XLR jacks: 48V power supplies for 1/8" (3.5 mm) jacks: 5V power supplies
Power Indicator	Power on: LED indicator in blue Low battery: LED indicator in red
Power Requirements	9 V alkaline or lithium battery (Not included)
Weight	357g
Dimensions	(L×W×H) 101.2mm × 85.0mm × 65.5mm

## Set Up Guide

- ① Install the battery.  
Lift up and pull out the drawer from the battery compartment.  
Insert 9V battery into place aligning + and - polarity as shown.  
Slide the drawer closed until it clicks into place.
- ② Mount the SR-PAX1 on your camera's hot shoe. Spin counter-clockwise to tighten up the mixer with the camera. Or mount the mixer to a tripod with the tripod socket on the bottom of the mixer.
- ③ Connect the supplied signal transmission line from the output jack (OUT) of mixer to the MIC input of camera. If there is a Mic/ Line switch on the camera, select it to Mic.
- ④ Connect microphones to the XLR inputs or 3.5mm inputs, or other audio sources to the 6.35mm inputs.
- ⑤ Long press the power button to turn on the SR-PAX1.
- ⑥ Set the LINE/MIC/PH buttons.  
When using self-powered microphones and wireless systems, set to MIC for microphone.  
When using guitar or other audio devices, please set to LINE.  
When using microphones operating on phantom power, please set to PH for phantom power. 5 volt phantom power is offered for 3.5mm microphone jacks and 48 volt phantom power is offered for XLR jacks.  
**NOTE: Please DO NOT set to PH when recording with microphones that do not operate on phantom power, like wireless receivers, mixing boards or any unbalanced device, because it may damage both the mixer and audio device.**
- ⑦ Set the M/S switch according to your needs. Please refer to Product Structure ⑧ Mono/Stereo Button.
- ⑧ Set the volume control knobs to low to avoid excessively loud audio from damaging your hearing. Plug an headphone into the 🎧 phone jack to monitor the sound.
- ⑨ We suggest you to do a test recording and playback the audio to see if it is acceptable. When testing, you could adjust the knobs flexibly to get the the optimum signal levels.

## Packing List

One SR-PAX1 main unit  
One signal transmission line  
User manual  
Warranty card

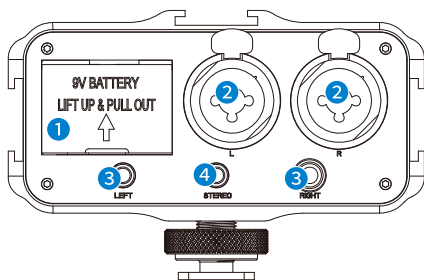
## 产品结构

### 简介

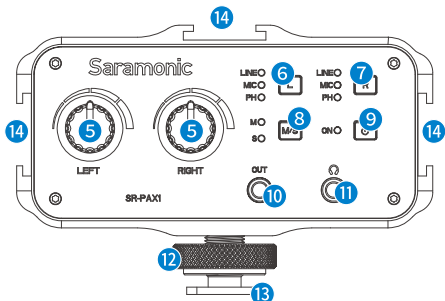
Saramonic SR-PAX1是双通道音频混音器，轻便小巧的体积，轻松实现双轨道音频混合输入到微单，单反，摄影机等设备。

SR-PAX1具有强大的兼容性，支持XLR平衡输出麦克风，无线麦克风系统，6.35mm乐器设备。此外，SR-PAX1还内置3.5mm 输入孔，支持接入自带3.5mm耳机孔手机，MP3播放器等设备。混音器还具有实时监听功能，可以根据实时录音情况进行各个通道的音量调节，提升你的录音体验。.

### 产品结构



- 1 电池仓
- 2 麦克风输入孔：XLR平衡输入孔（2\*）  
6.35mm乐器输入孔：6.35mm单声道输入孔（2\*）
- 3 3.5mm左/右声道输入孔
- 4 3.5mm立体声输入孔



⑤ 左/右通道音量调节旋钮

⑥ 左通道电源开关设置键

⑦ 右通道电源开关设置键

⑧ M/S开关

若您只使用单声道进行录制，请将开关拨至M档位。左右声道的信号传输将会保持一致，即左右声道声音效果是相同的。

若您只使用双声道进行录制，请将开关拨至S档位。可以单独调节左/右声道的电平大小。

⑨ SR-PAX1电源开关键

⑩ 输出孔

3.5mm立体声输出孔，将混音器中的信号传输至手机。

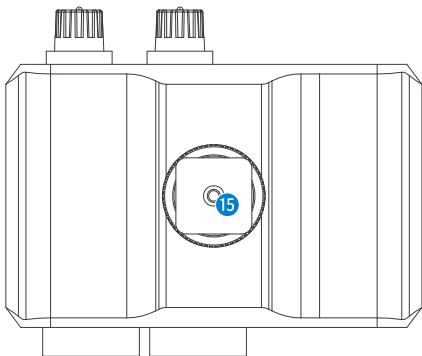
⑪ 3.5mm耳机监听孔

⑫ 锁定旋钮

⑬ 标准冷靴座

⑭ 3个内置冷靴座卡口

⑮ 1/4" 螺丝孔



## 技术参数

输入	XLR & 6.3mm jack x 2 1 /8" (3.5 mm) jack x 3
输出	1/8" (3.5 mm) jack x 1
耳机监听孔	1/8" (3.5 mm) jack x 1
频率响应	20 Hz to 20 KHz, +/-1 dB
失真率	< 0.01%
信噪比	74dBu
左右增益	LINE: -30dBu MIC: 0dBu MIC/PH:0dBu
幻象电源	3.5mm接口可提供5V的幻象电源 XLR接口可提供48V的幻象电源
电源指示灯	开启: LED指示灯亮蓝灯 低电量: LED灯亮红灯
供电方式	9V锂电池或碱性电池 (不包含)
重量	357g
尺寸	(L x W x H) 101.2mm x 85.0mm x 65.5mm



## 操作指南

### 1 装入电池

打开电池仓，按照正负极指示正确放入9V电池，关闭电池仓

### 2 将SR-PAX1安装至相机

### 3 使用信号传输线，将音频信号输入至相机。

### 4 将麦克风插入XLR输入孔/3.5mm输入孔，其他线性输入设备可插入6.35mm输入孔。

### 5 长按电源键开启SR-PAX1

### 6 设置LINE/MIC/PH开关键

若您使用的是自供电麦克风或无线麦克风系统，请将档位拨至MIC

若您连接6.35mm乐器的设备，请将档位拨至LINE

若您连接需幻象电源供电的麦克风，请将档位拨至PH

3.5mm接口可提供5V的幻象电源。

XLR接口可提供48V的幻象电源。

## 包装清单

SR-PAX1麦克风

音频传输线

说明书

保修卡



For better recording experience, the application **SmartRecorder** is recommended.

为获得更好的录制体验，推荐使用枫笛 Saramonic 自主研发应用软件 **SmartRecorder**。



Scan the QR code and follow us!  
扫描微信关注枫笛公众号！

Shenzhen Jiayz Photo Industrial., Ltd  
深圳市长丰影像器材有限公司

A16 Building, Intelligent Terminal Industrial Park of Silicon Valley  
Power, Guanlan, Longhua District, Shenzhen, China  
深圳市龙华区观澜街道大富工业区硅谷动力智能终端产业园A16栋